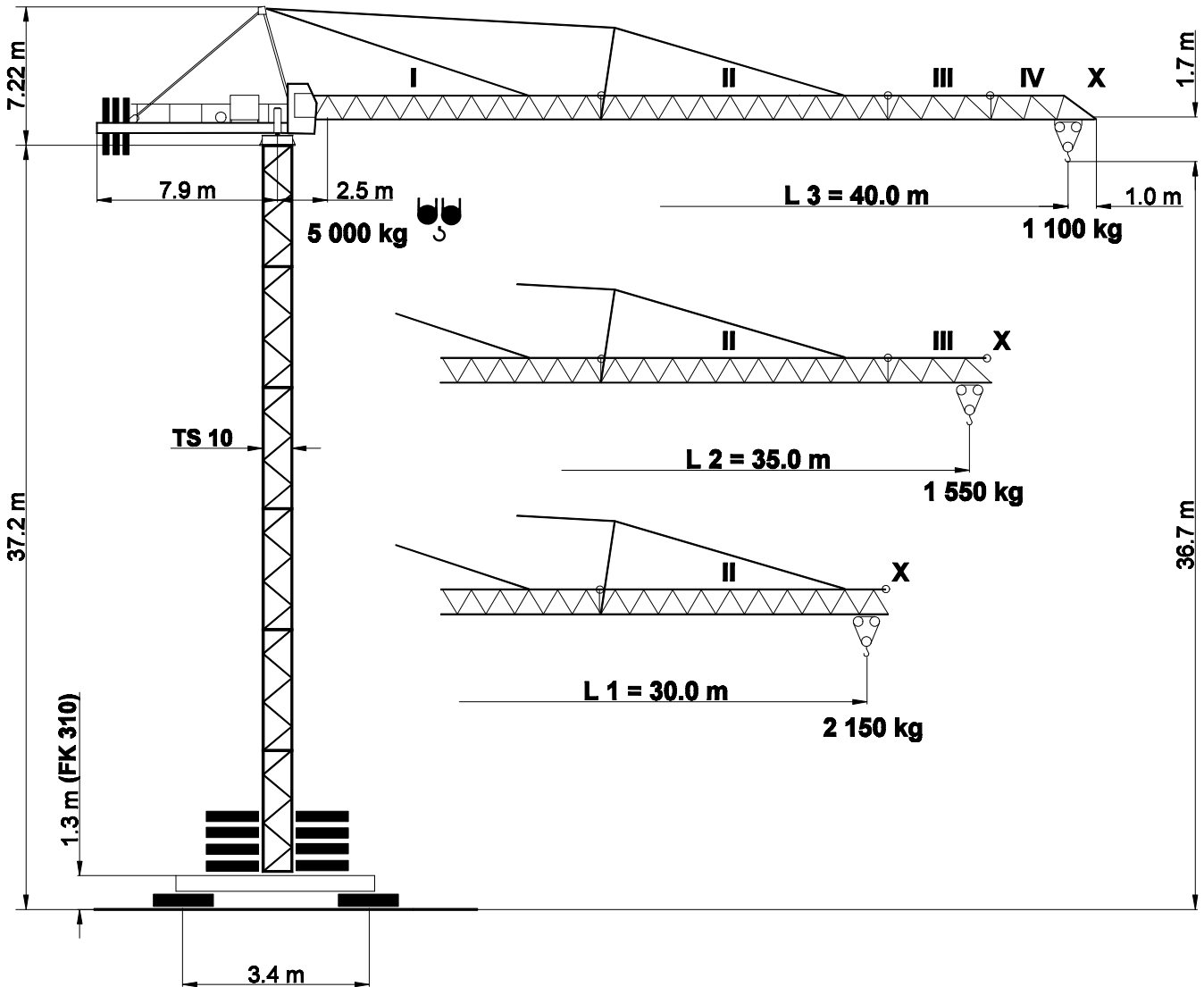
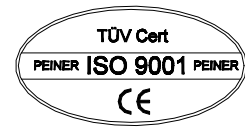


DIN 15018	H1 / B3
BGL 2125	0056
Max. Tragfähigkeit Lifting capacity Force de levage	5.0 t

PEINER SK 56



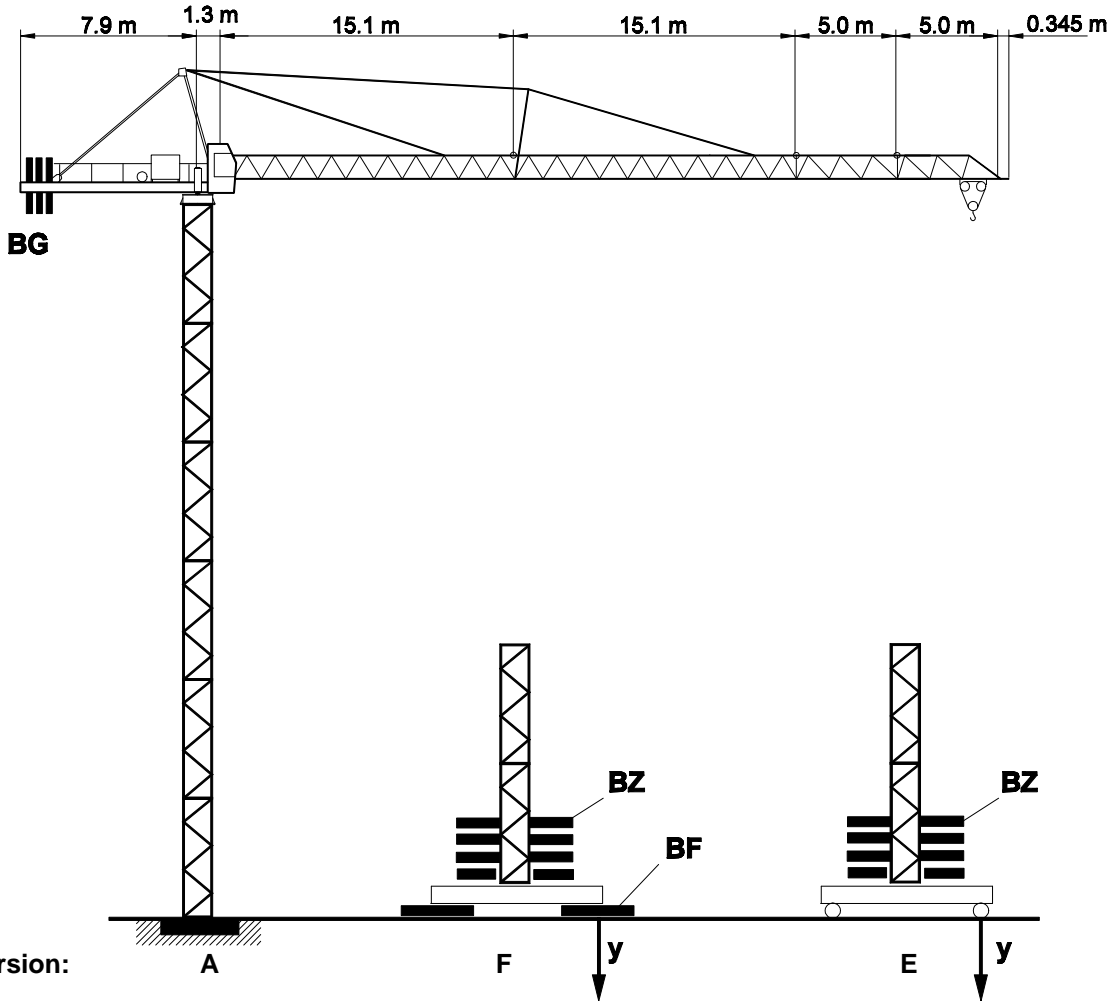
Unsere Vertretung:
Our representative:
Notre représentant:

SK 56

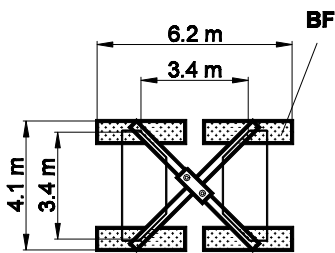
Turmkombinationen, Hakenhöhen, Eckkräfte, Zentralballast

Combinations of tower section, hook heights, forces acting per corner, base ballast

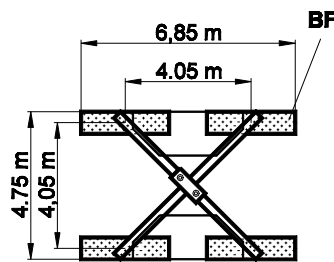
Combinations possibles et hauteurs sous crochet, pressions par coin, contrepoids central



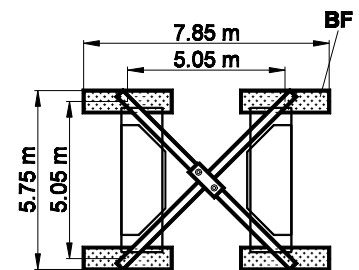
FK 310



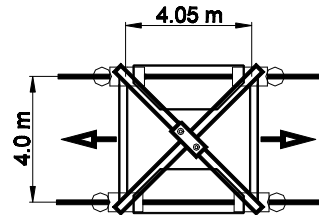
FK 410/414



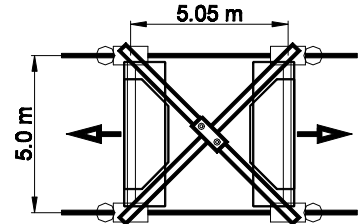
FK 514



FKF 410/414



FKF 514



Bodenauflagen

Ground support
Support sol

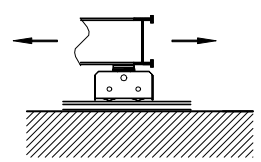
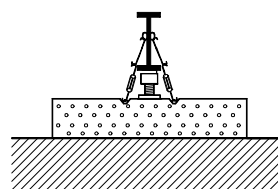
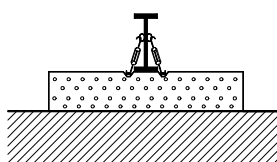
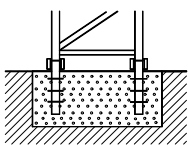
Version:

A

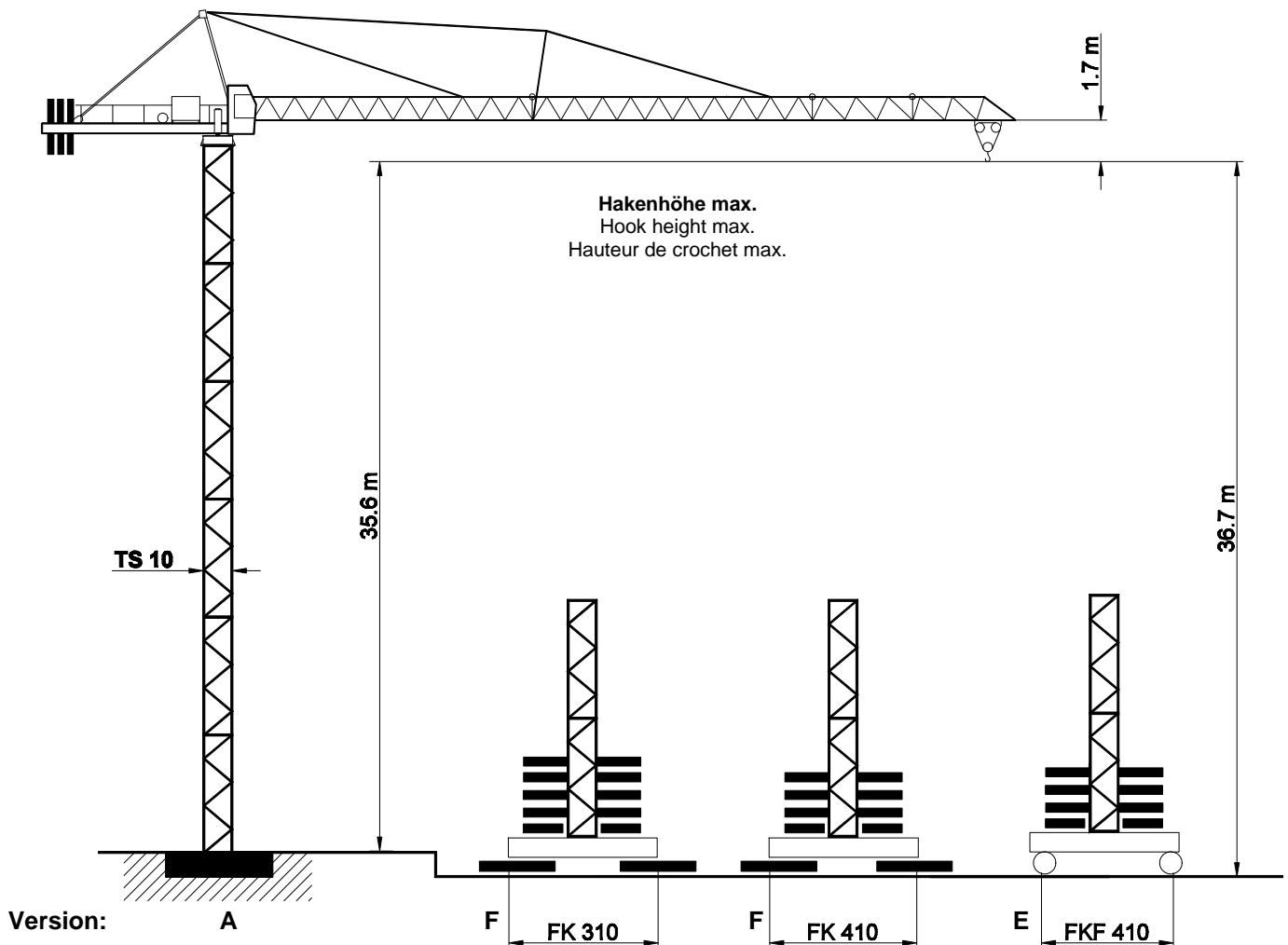
F

F / SP

E



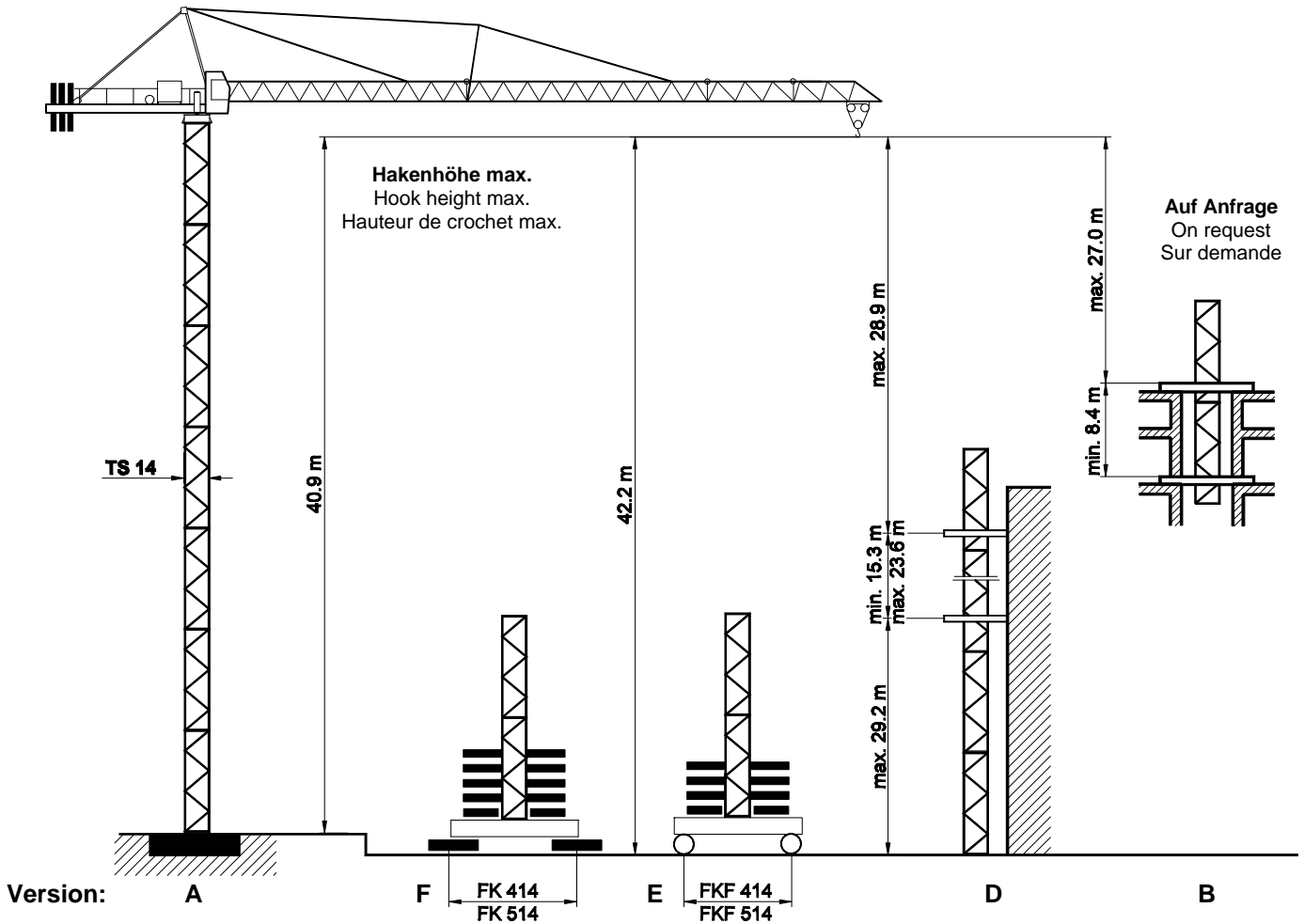
SK 56 Turm / Tower / Tour TS 10



TS 10		Version A	Version F						Version E						
Turm / Tower / Tour TS 10.3	TS 10.4	HK	HK	BZ + BF	y i.B.	a.B.	BZ + BF	y i.B.	a.B.	Turm / Tower / Tour TS 10.3	TS 10.4	BZ	y i.B.	a.B.	
6.0 m	12.0 m	m	m	t	kN	kN	t	kN	kN	6.0 m	12.0 m	t	kN	kN	
6 x TS 10.3	3 x TS 10.4	35.6	36.7	60.8	392	437	40.8	319	359	5 x TS 10.3	3 x TS 10.3	40.0	341	371	
5 x TS 10.3		29.6	30.7	40.8	320	316	30.8	275	270	5 x TS 10.3		30.0	293	278	
4 x TS 10.3	2 x TS 10.4	23.6	24.7	30.8	276	230	30.8	259	217	4 x TS 10.3	2 x TS 10.4	30.0	274	225	
3 x TS 10.3		17.6	18.7	30.8	259	223	20.8	219	186	3 x TS 10.3		30.0	257	214	
2 x TS 10.3	1 x TS 10.4	11.6	12.7	30.8	244	219	20.8	205	182	2 x TS 10.3	1 x TS 10.4	20.0	216	186	
1 x TS 10.3		5.6	6.7	30.8	231	216	20.8	194	179	1 x TS 10.3		20.0	202	182	
Fundament Foundation Fondaton 5.0 x 5.0 x 1.2 m			Fundamentkreuz Cruciform base Croix de fondation						Fundamentkreuz, fahrbar Cruciform base, railgoing Croix de fondation, mobile						
			FK 310			FK 410			FKF 414						
Fundamentfüße Fixing angles Ancres de fondation 4 x FF 10/14			BF 4 x 2.7 t		BZ Block 5.0 t		BF 4 x 2.7 t		BZ Block 5.0 t		Fahrschemel / bogie gerade / straight / droite F 40/1				

TS 10.3 = 6.0 m

TS 10.4 = 12.0 m




TS 14		Version A	Version F						Version E						
Turm / Tower / Tour TS 14.3	TS 14.4	HK	HK	BZ + BF t	y i.B.	a.B.	BZ + BF t	y i.B.	a.B.	BZ t	y i.B.	a.B.	BZ t	y i.B.	a.B.
5.9 m	11.8 m	m	m	t	kN	kN	t	kN	kN	t	kN	kN	t	kN	kN
7 x TS 14.3		40.9	42.2				43.0	329	449				42.2	334	449
6 x TS 14.3	3 x TS 14.4	35.0	36.3	60.8	379	435	33.0	285	330	60.0	405	448	32.2	290	333
5 x TS 14.3		29.1	30.4	40.8	308	316	23.0	243	247	40.0	328	326	22.2	247	251
4 x TS 14.3	2 x TS 14.4	23.2	24.5	30.8	264	231	23.0	227	198	30.0	280	239	22.2	231	203
3 x TS 14.3		17.3	18.6	20.8	222	187	23.0	213	182	20.0	235	191	22.2	217	186
2 x TS 14.3	1 x TS 14.4	11.4	12.7	20.8	207	183	23.0	200	178	20.0	218	187	22.2	204	182
1 x TS 14.3		5.5	6.8	20.8	195	179	23.0	189	174	20.0	203	183	22.2	193	178
Fundament Foundation Fondaton 5.6 x 5.6 x 1.2 m				Fundamentkreuz Cruciform base Croix de fondation						Fundamentkreuz, fahrbar Cruciform base, railgoing Croix de fondation, mobile					
Fundamentfüße Fixing angles Ancres de fondation 4 x FF 10/14				FK 414		FK 514				FKF 414			FKF 514		
				BF 4 x 2.7 t	BZ Block 5.0 t	BF 4 x 2.7 t	BZ Block 5.0 t			Fahrschemel / bogie gerade / straight / droite			Fahrschemel / bogie Kurve / curve / courbe		
										F 40/1			F 320		

TS 14.3 = 5.9 m

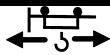



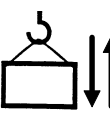




TS 14.4 = 11.8 m

SK 56

Ausladung und Tragfähigkeit / Radius and capacity / Portée et charge

Ausleger Jib Flèche	Max. Tragfähigkeit max. capacity charge max.	Ausladung (m) und Tragfähigkeit (t) Radius (m) and capacity (t) Portée (m) et charge (t)															
		12	14	16	18	20	22	24	26	28	30	32	34	35	36	38	40
m	5.0 t																
L3 40.0	2.5 - 11.3 m	4.63	3.86	3.30	2.88	2.54	2.27	2.05	1.87	1.71	1.57	1.45	1.35	1.30	1.26	1.17	1.10
L2 35.0	2.5 - 12.9 m	5.0	4.53	3.88	3.38	2.99	2.68	2.42	2.21	2.02	1.86	1.73	1.61	1.55			
L1 30.0	2.5 - 14.4 m	5.0	5.0	4.44	3.87	3.43	3.08	2.78	2.54	2.33	2.15						

Geschwindigkeiten / Speeds / Vitesses

PU S 4-50/2		v = \rightarrow 22 / 45 m / min.	4.0 kW	400 V 50 Hz 3 Ph				
SR 5-90/3		v = 0 \rightarrow 25 m / min.	2 x 5.0 kW					
K SRA 55/4		v = 0 \rightarrow 0.75 min ⁻¹	4.4 kW					
 HK max. = 90 m 2 - Lagen / 2 - layers / 2 - couches								
Type			\rightarrow 52 m / min	1 500 kg		\rightarrow 26 m / min	3 000 kg	Motorenleistung ges. Total motor output Puissance moteur (ohne/without/sans SR 5-90/3) ~ 25 kW
PU 15-25/3			\rightarrow 26 m / min	2 500 kg		\rightarrow 13 m / min	5 000 kg	
15.0 kW			\rightarrow 6 m / min			\rightarrow 3 m / min		Anschlußleistung Connected power Puissance installée 40 kVA

Gegengewichtsballast / Counterweight / Contrepoids

Ausleger / Jib / Flèche		L 1	L 2	L 3
Gegengewicht Counterweight Contrepoids	BG	9 450 kg	9 450 kg	9 450 kg
	[t]	3 x 3.15	3 x 3.15	3 x 3.15

SK 56 Transportmaße und Transportgewichte

Dimensions and weights of transport
Dimensions et poids pour transport

Montagegewichte siehe Betriebsanleitung!
Mounting weights see operating manual!
Poids de montage voir instruction de service!

	Benennung Designation Désignation		Abmessungen (m / ft) Dimensions (m / ft)			Gewicht Weight Poids t / kips	Volumen Volume m ³ / ft ³
			l	b	h		
1	Ausleger / Jib / Flèche Schuss / Section / Élément I Schuss / Section / Élément II		15.25	1.05	1.50	2.40	24.0
			50.03	3.45	4.92	5.3	849
			14.43	0.94	1.20	1.00	16.3
2	Ausleger / Jib / Flèche Schuss / Section / Élément IV Schuss / Section / Élément V Seilstation / Jib end / Bout de flèche X		5.15	0.94	0.94	0.25	4.5
			16.90	3.08	3.08	0.55	160
			5.15	0.94	0.94	0.25	4.5
3	Drehbühne mit Drehkranzauflage u. Kabine Turntable with slewing ring support and cabin Plateforme tournante avec support de couronne d'orientation et cabine		10.14	2.50	2.35	5.75	59.6
			33.27	8.20	7.71	12.68	2103
			9.25	1.77	2.04	4.5	33.4
4	Drehbühne mit Drehkranzauflage Turntable with slewing ring support Plateforme tournante avec support couronne d'orientation		30.03	5.81	6.69	9.92	1167
			2.65	2.21	1.30	0.50	7.6
			8.69	7.25	4.26	1.10	268
6	Gegengewichtsballast Counter jib ballast Contrepoids		1.20	0.50	2.84	3.15	1.4
			3.94	1.64	9.32	6.95	60
			6.00	1.25	1.25	1.35	9.38
7	Turmschuss Tower section Élément de tour		19.69	4.10	4.10	2.98	355
			5.91	1.60	1.61	1.45	15.22
			19.39	5.25	5.28	3.20	538
8	Fundamentkreuz, fahrbar, geklappt Movable undercarriage, folded Châssis roulant, replié		12.00	1.25	1.25	2.60	18.75
			39.37	4.10	4.10	5.73	662
			11.80	1.60	1.61	2.70	30.40
9	Fundamentkreuz, stationär, geklappt Stationary undercarriage, folded Châssis fixe, replié		38.71	5.25	5.28	5.95	1073
			6.80	2.20	1.62	5.70	24.2
			22.31	7.22	5.32	12.57	857
10	Zentralballaststein Central ballast block Bloc de fondation		8.25	2.40	1.67	7.40	33.07
			27.07	7.87	5.48	24.28	1167
			5.74	0.95	0.90	3.25	4.91
11	Fundamentblock Foundation pad Bloc de fondation		18.83	3.12	2.95	7.16	173
			6.04	1.68	0.81	3.40	8.22
			19.82	5.51	2.66	7.50	290
12	Diverse Montageteile Accessories Accessoires		7.55	1.50	1.01	4.90	11.44
			24.77	4.92	3.31	16.08	403
			4.00	1.35	0.65	6.10	3.5
10	Fundamentblock Foundation pad Bloc de fondation		13.12	4.43	2.13	13.45	124
			3.50	1.50	0.67	5.00	3.5
			11.48	4.92	2.20	11.24	124
11	Fundamentblock Foundation pad Bloc de fondation		2.80	0.70	0.55	2.70	1.08
			9.19	2.30	1.80	5.95	38