

KPGMB

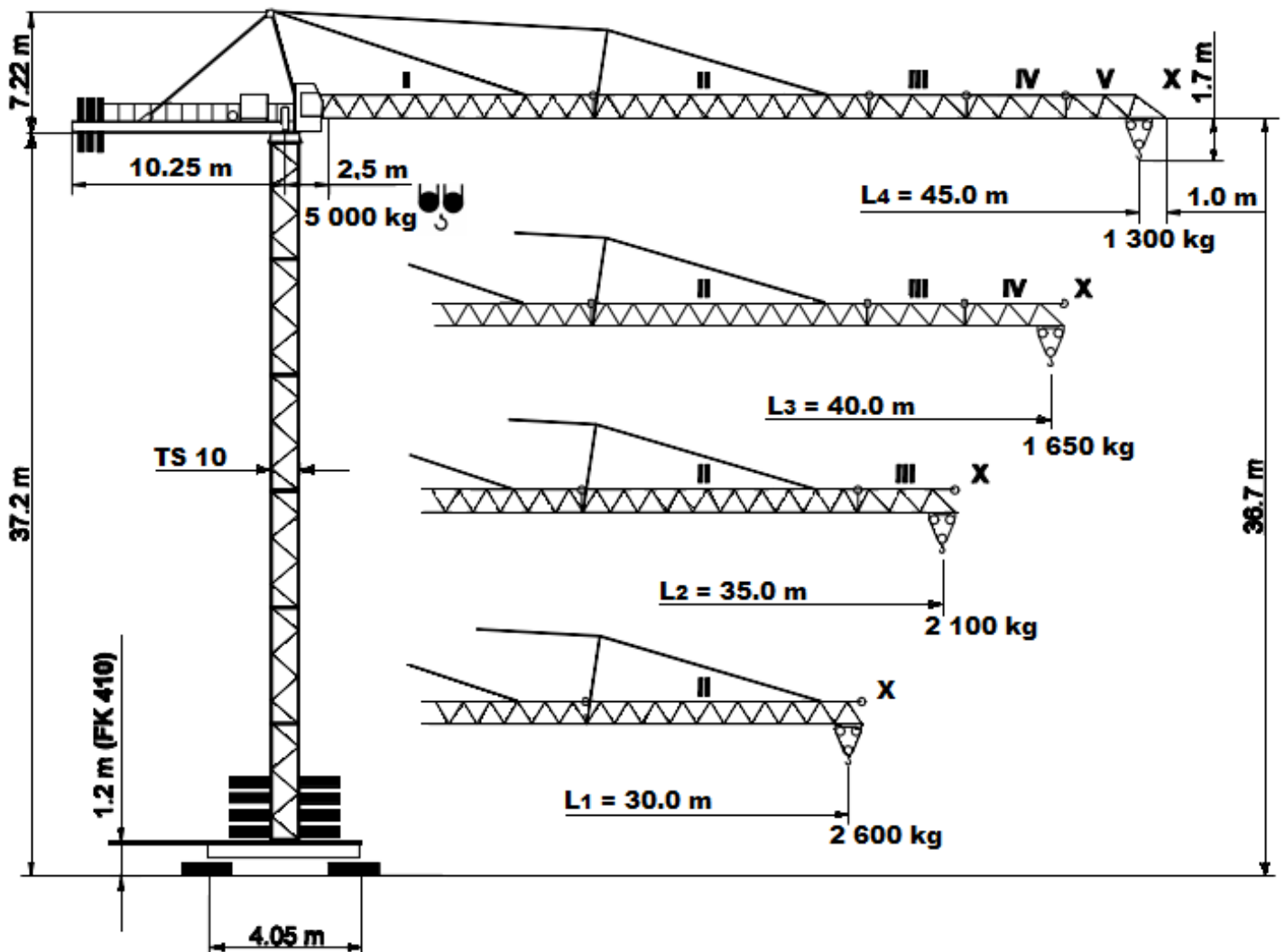
Krakowskie Przedsiębiorstwo Gospodarki Maszynami Budownictwa sp. z
o.o.

31-589 Kraków, ul. Sołtysowska 1

e-mail: kontakt@kpgmb.com.pl tel./fax: 12 643 20 68

PEINER SK 76

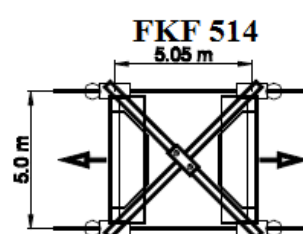
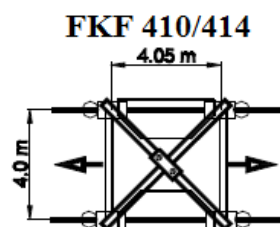
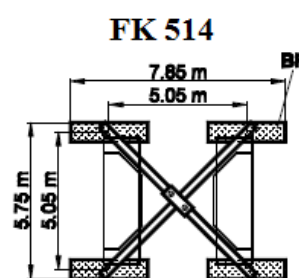
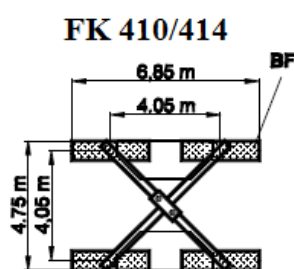
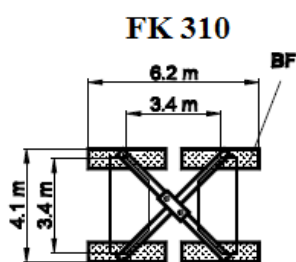
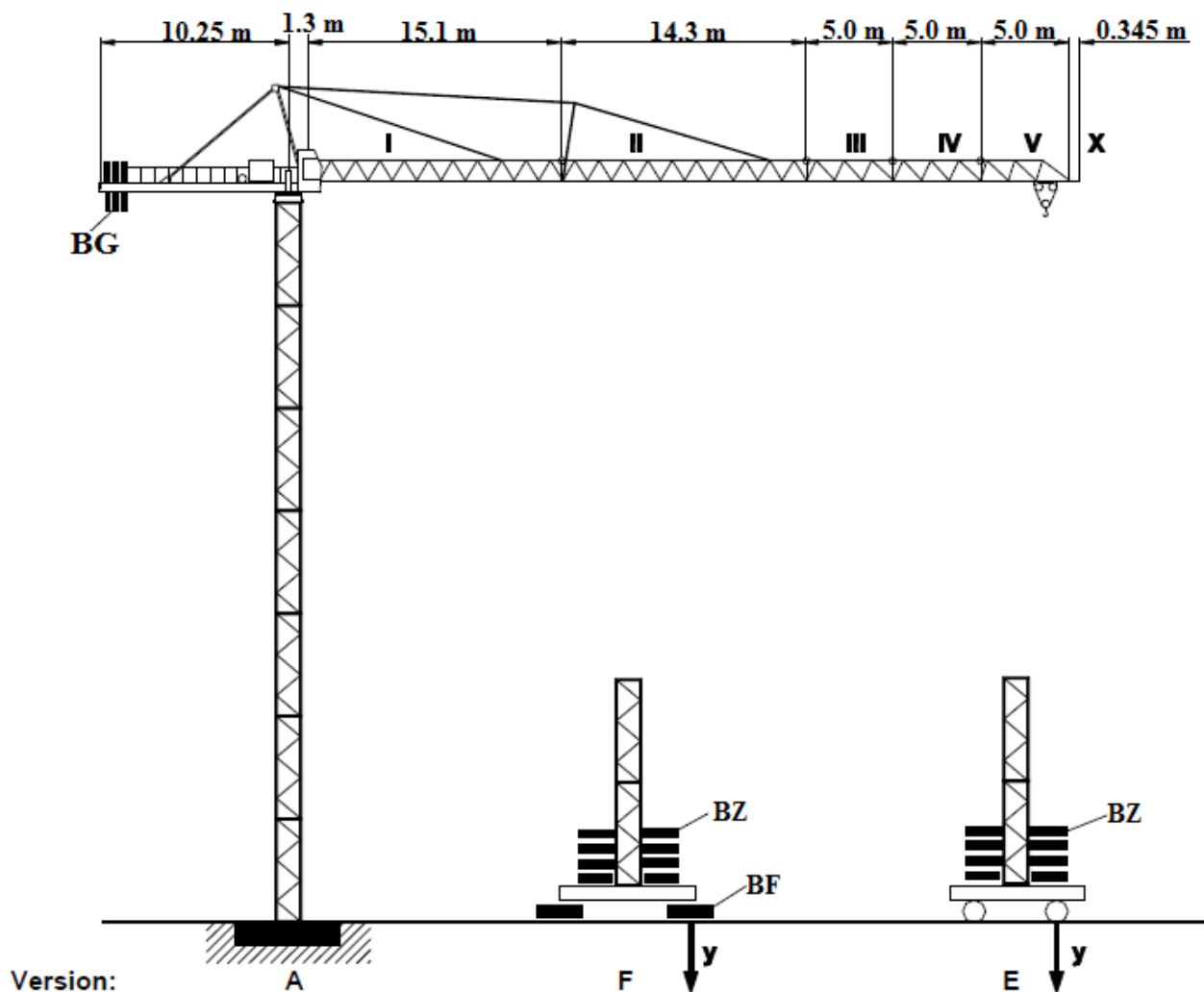
DIN 15018	H1/B3
BGL 2125	0071
Max. Tragfähigkeit	5.0 t
Lifting capacity	
Force de levage	



SK 76 Turmkombinationen, Hakenhöhen, Eckkräfte, Zentralballast

Combinations of tower section, hook heights, forces acting per corner, base ballast

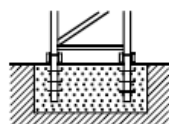
Combinations possibles et hauteurs sous crochet, pressions par coin, contreponds central



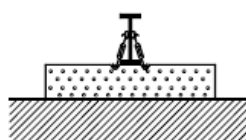
Bodenauflagen

Ground support
Support sol

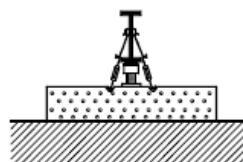
Version: A



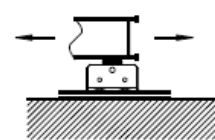
F



F / SP

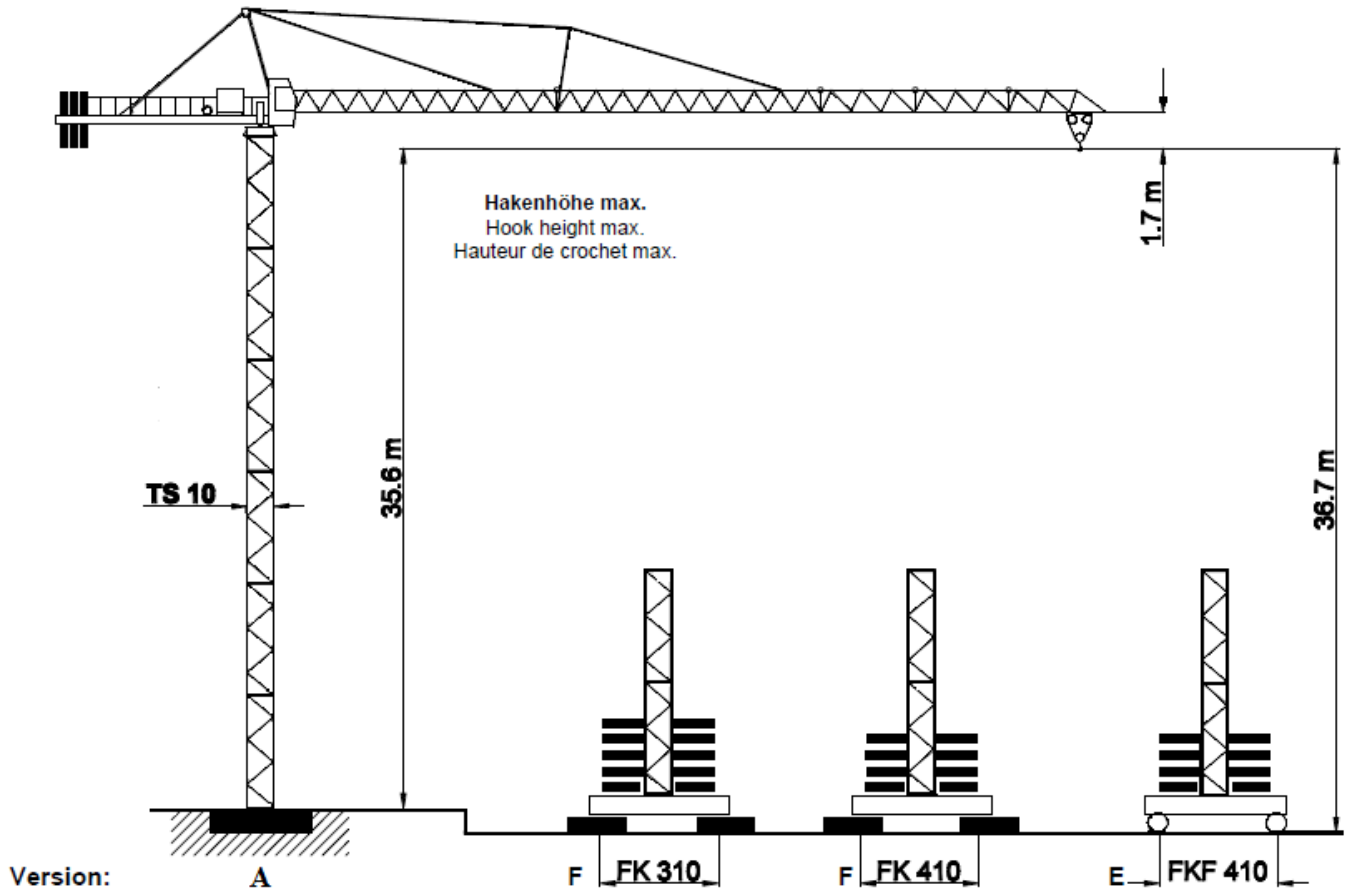


E



SK 76

Turm/ Tower/ Tour TS 10



TS 10		Version A		Version F						Version E				
Turm/Tower/Tour		HK	HK	BZ +BF t	y		BZ +BF t	y		Turm/ Tower/ Tour		BZ	y	
TS 10.3	TS 10.4	m	m	t	i.B.	a.B.	t	i.B.	a.B.	TS 10.3	TS 10.4	t	i.B.	a.B.
6.0 m	12.0 m				kN	kN		kN	kN	6.0 m	12.0 m		kN	kN
6 x TS 10.3	3 x TS 10.4	35.6	36.7	70.8	444	482	50.8	366	398	1 x TSV 10.3	1 x TSV 10.3	50	404	402
										5 x TS 10.3	2 x TS 10.4 1 x TS 10.3			
5 x TS 10.3		29.6	30.7	50.8	368	347	40.8	320	300	5 x TS 10.3		40	349	304
4 x TS 10.3	2 x TS 10.4	23.6	24.7	40.8	324	261	30.8	277	222	4 x TS 10.3	2 x TS 10.4	30	298	202
3 x TS 10.3		17.6	18.7	30.8	281	233	20.8	237	194	3 x TS 10.3		20	248	198
2 x TS 10.3	1 x TS 10.4	11.6	12.7	30.8	252	217	20.8	223	191	2 x TS 10.3	1 x TS 10.4	20	232	195
1 x TS 10.3		5.6	6.7	30.8	239	214	20.8	211	188	1 x TS 10.3		20	218	192
Fundament Foundation Fondaton 5.0 x 5.0 x 1.2 m		Fundamentkreuz Cruciform base Croix de fondation						Fundamentkreuz, fahrbar Cruciform base, railgoing Croix de fondation, mobile						
				FK 310		FK 410		FKF 414						
FundamentfüÙÙbe Fixing angles Ancres de fondation 4 x FF 10/14				BF 4 x 2.7 t	BZ Block 5.0 t	BF 4 x 2.7 t	BZ Block 5.0 t	Fahrschemel / bogie Gerade / straight / droite F 40/1						

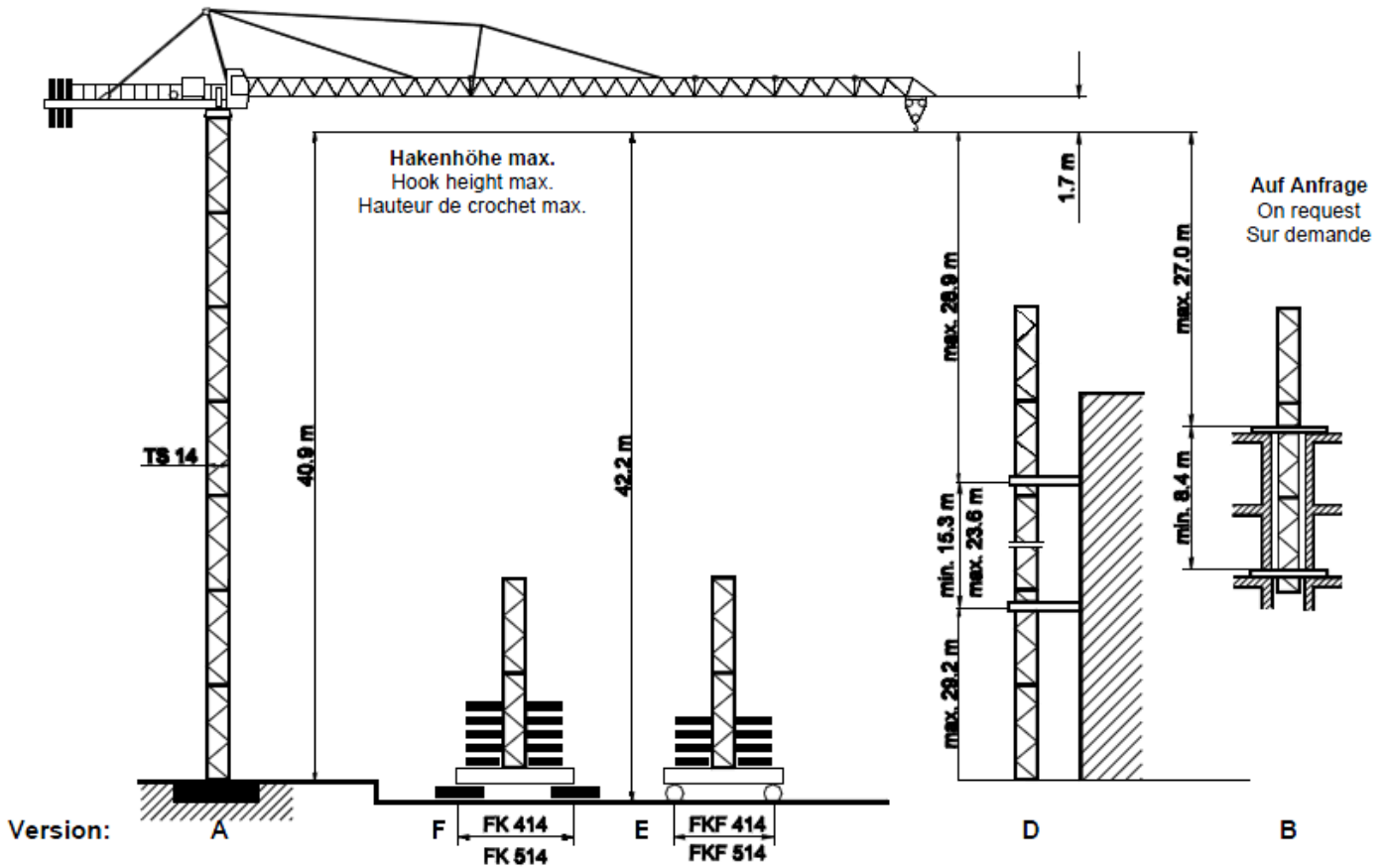
TS 10.3 = 6.0 m

TS 10.4 = 12.0 m

TSV 10.3 = 6.0 m

SK 76

Turm/ Tower/ Tour TS 14



TS 14		Version A		Version F						Version E					
Turm/Tower/Tour		HK	HK	BZ +BF t	y		BZ +BF t	y		BZ t	y		BZ t	y	
TS 14.3	TS 14.4	m	m	t	i.B.	a.B.	t	i.B.	a.B.	t	i.B.	a.B.	t	i.B.	a.B.
5.9 m	11.8 m				kN	kN		kN	kN		kN	kN		kN	kN
7 x TS 14.3		40.9	42.2	70.8	446	561	53.0	371	449	70.0	489	561	42.2	385	449
6 x TS 14.3	3 x TS 14.4	35.0	36.3	60.8	398	438	43.0	327	357	60.0	433	442	32.2	334	338
5 x TS 14.3		29.1	30.4	40.8	327	319	33.0	284	276	40.0	354	323	22.2	285	257
4 x TS 14.3	2 x TS 14.4	23.2	24.5	30.8	283	234	23.0	243	202	30.0	297	237	12.2	233	183
3 x TS 14.3		17.3	18.6	20.8	241	196	10.8	198	159	20.0	252	200	12.2	216	171
2 x TS 14.3	1 x TS 14.4	11.4	12.7	20.8	226	192	10.8	184	155	20.0	235	196	12.2	201	167
1 x TS 14.3		5.5	6.8	20.8	212	188	10.8	173	152	20.0	219	192	12.2	188	164
Fundament Foundation Fondaton 5.6 x 5.6 x 1.2 m		Fundamentkreuz Cruciform base Croix de fondation FK 414						Fundamentkreuz, fahrbar Cruciform base, railgoing Croix de fondation, mobile FKF 414							
Fundamentfüße Fixing angles Ancres de fondation 4 x FF 10/14				BF 4 x 2.7 t	BZ Block 5.0 t	BF 4 x 2.7 t	BZ Block 5.0 t 6.1 t	Fahrschemel / bogie Gerade / straight / Droite F 40/1			Fahrschemel / bogie Kurve / curie/ courbè F 320				

TS 14.3 = 5.9 m

TS 14.4 = 11.8 m

SK 76 Ausladung und Tragfähigkeit / Radius and capa city / Portée et charge

Ausleger Jib Flèche m	Max. Tragfähigkeit Max. capacity Charge max. 5.0 t	Ausladung (m) und Tragfähigkeit (t) Radius (m) and capa city (t) Portée (m) et charge (t)																
		16	18	20	22	24	26	28	30	33	35	38	40	41	42	43	44	45
L4 45.0	2.5 – 14.2 m	4.36	3.81	3.37	3.02	2.73	2.49	2.29	2.11	1.89	1.76	1.60	1.50	1.46	1.41	1.37	1.34	1.3
L3 40.0	2.5 – 15.3 m	4.75	4.15	3.68	3.30	2.99	2.73	2.50	2.31	2.07	1.93	1.75	1.65					
L2 35.0	2.5 – 16.4 m	5.00	4.49	3.99	3.58	3.24	2.96	2.72	2.51	2.25	2.10							
L1 30.0	2.5 – 16.9 m	5.00	4.65	4.12	3.70	3.35	3.06	2.81	2.60									

Geschwindigkeiten / Speeds / Vitesses

PU S 4-50/2		V = 22 / 45 m / min.	4.0 kW	400 V
SR 5-90/3		V = 0 → 25 m / min.	2 x 5.0 kW	50 Hz
K SRA 75/4		V = 0 → 0.75 min. ⁻¹	4.4 kW	3 Ph



HK max. = 85 m

2 – Lagen / 2 – layers / 2 – couches

Type FU 17 – 25 / 5 17.0 kW				Motorenleistung ges. Total motor output ~ 25 kW Puissance moteur (ohne/witkout/sans SR 5-90/3) Anschlußleistung 40 kVA Connected Power Puissance installée
---------------------------------------	--	--	--	---

Gegengewichtsballast / Counterweight / Contrepoids

Ausleger / Jib / Flèche		L1	L2	L3	L4
Gegengewicht Counterweight Contrepoids	BG	7 500 kg	8 150 kg	8 800 kg	9 450 kg
	[t]	3 x 2.50	2 x 2.50 1 x 3.15	1 x 2.50 2 x 3.15	3 x 3.15

SK 76/86 Transportmaße und Transportgewichte

Dimensions and weights of transport
Dimensions et poids pour transport

Montagegewichte siehe Betriebsanleitung!
Mounting weights see operating manual!
Poids de montage voir instruction de service!

	Benennung Designation Désignation		Abmessungen (m/ft) Dimensions (m / ft)			Gewicht Weight Poids t / kips	Volumen Volume m ³ / ft ³
			l	b	h		
1	Ausleger / Jib / Flèche Schuss / Section / Elément I Schuss / Section / Elément II		15.25	1.05	1.23	1.90	24.0
			50.03	3.45	4.03	4.2	849
			14.43	0.94	1.20	0.96	16.3
2	Ausleger / Jib / Flèche Schuss / Section / Elément IV Schuss / Section / Elément V Schuss / Section / Elément VI		5.15	0.94	0.94	0.25	4.5
			16.90	3.08	3.08	0.55	160
			5.15	0.94	0.94	0.20	4.5
3	Drehbühne mit Drehkranzauflage u. Kabine Turntable with slewing ring suport and cabin Plateforme tournate avec suport de couronne d'orientation et cabine		12.61	2.40	2.30	6.78	69.6
			41.37	7.87	7.55	14.95	2458
			11.36	1.77	2.04	4.76	41.0
4	Drehbühne mit Drehkranzauflage Turntable with slewing ring suport Plateforme tournate avec suport couronne d'orientation		11.36	1.77	2.04	4.76	41.0
			37.27	5.81	6.69	10.49	1449
			2.65	2.21	1.30	0.50	7.6
5	Kabine mit Podest Und Geländer Cabin with suport and railing Cabine Alec appuit et garde corps		2.65	2.21	1.30	0.50	7.6
			8.69	7.25	4.26	1.10	268
			1.20	0.50	2.84	3.15	1.4
6	Gegengewichtsballast Counter jib ballast Contrepoids		1.20	0.50	2.84	3.15	1.4
			3.94	1.64	9.32	6.95	60
			1.20	0.50	2.29	4.15	1.2
7	Turmschuss Tower section Elément de tour		6.00	1.25	1.25	1.35	9.38
			19.69	4.10	4.10	2.98	355
			6.00	1.25	1.25	1.50	9.38
8	Fundamentkreuz, fahrbar, geklappt Movable undercarriage, folded Châssis roulant, replié		6.80	2.20	1.62	5.70	24.2
			22.31	7.22	5.32	12.57	857
			8.25	2.40	1.67	7.40	33.07
9	Fundamentkreuz, stationär, geklappt Movable undercarriage, folder Châssis fixe, replié		5.74	0.95	0.90	3.25	4.91
			18.83	3.12	2.95	7.16	173
			6.04	1.68	0.81	3.40	8.22
10	Zentralballastsein Central ballast Block Bloc de fondation		4.00	1.35	0.65	6.10	3.5
			13.12	4.43	2.13	13.45	124
			3.50	1.50	0.67	5.00	3.5
11	Fundamentblock Foundation pad Bloc de fondation		2.80	0.70	0.55	2.70	1.08
			9.19	2.30	1.80	5.95	38
			2.80	0.70	0.55	2.70	1.08
12	Diverse montageteile Accessories Accessories						