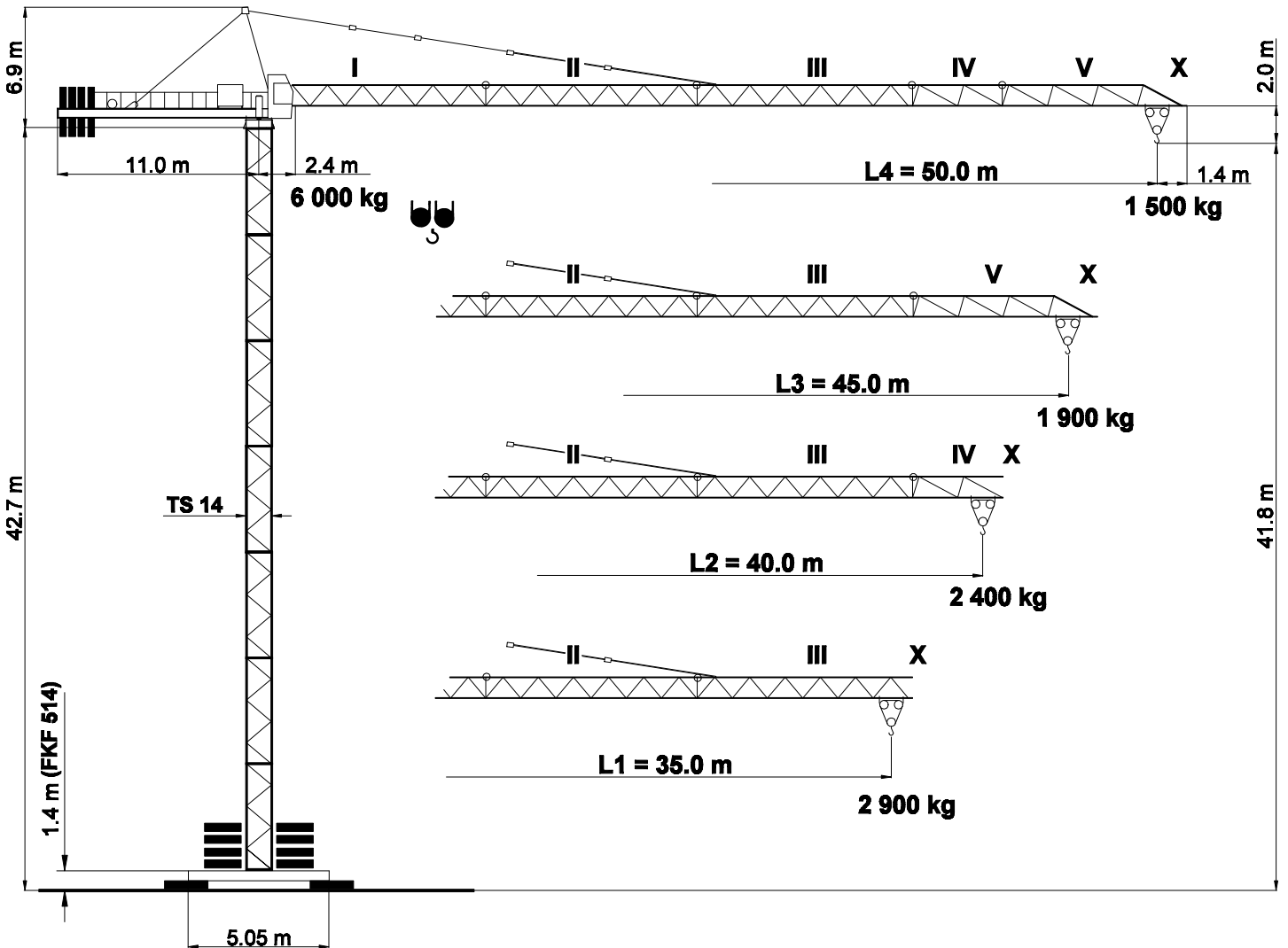
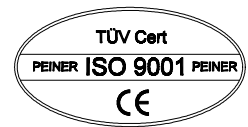


DIN 15018	H1 / B3
BGL 2125	0090
Max. Tragfähigkeit Lifting capacity Force de levage	6.0 t

PEINER SK 96/1



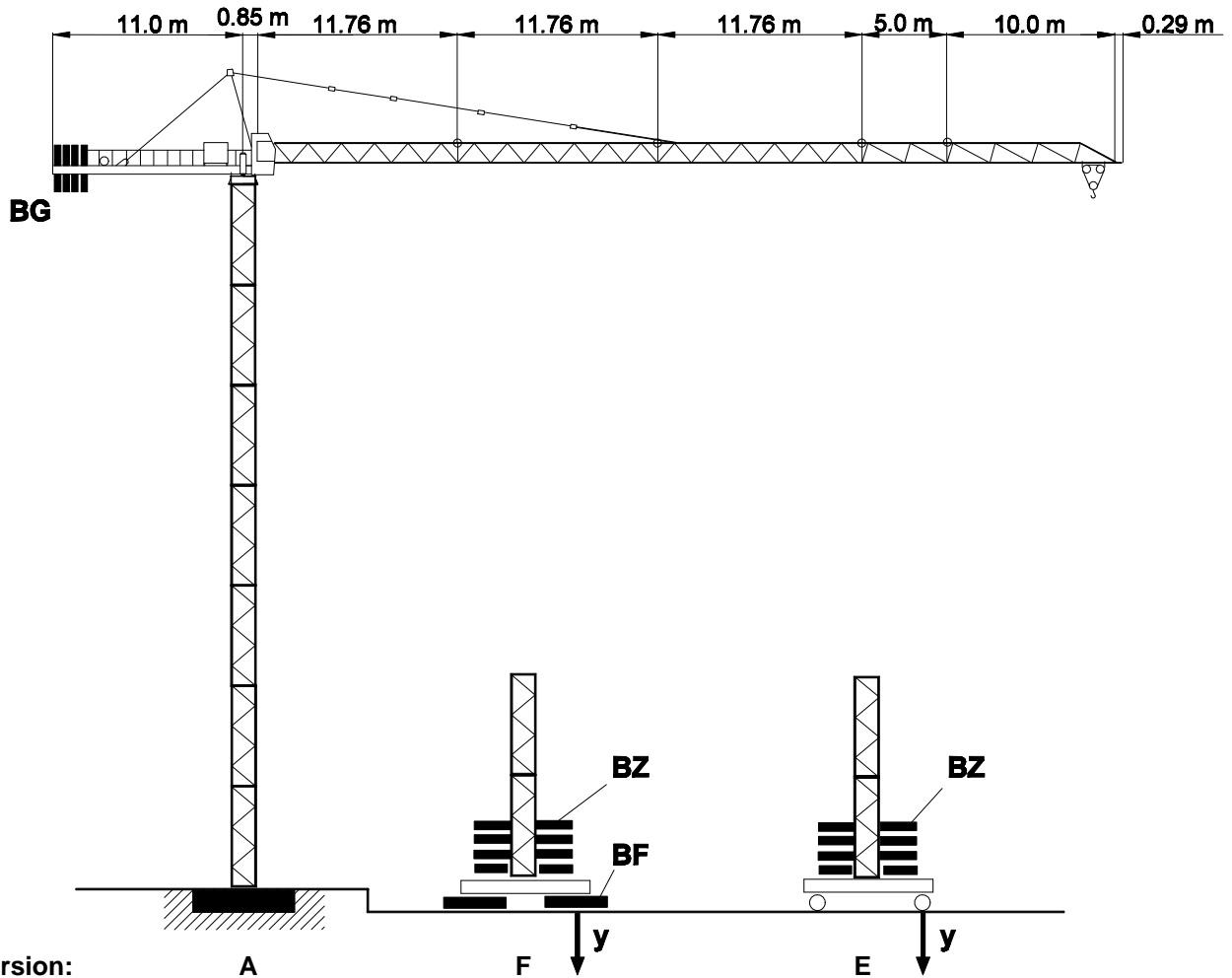
Unsere Vertretung:
Our representative:
Notre représentant:

SK 96/1

Turmkombinationen, Hakenhöhen, Eckkräfte, Zentralballast

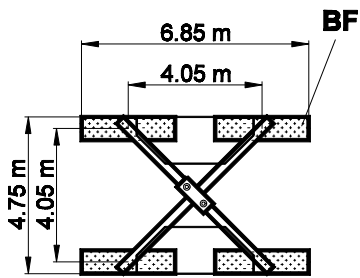
Combinations of tower section, hook heights, forces acting per corner, base ballast

Combinations possibles et hauteurs sous crochet, pressions par coin, contrepoids central

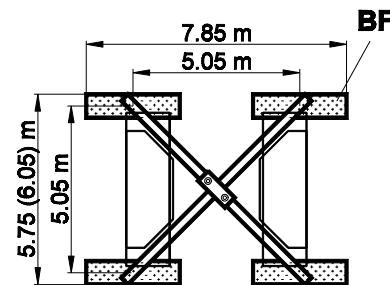


Version:

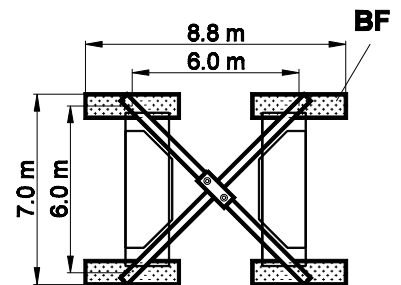
FK 414



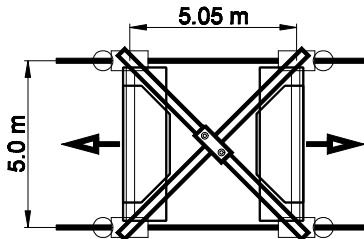
FK 514 / 519



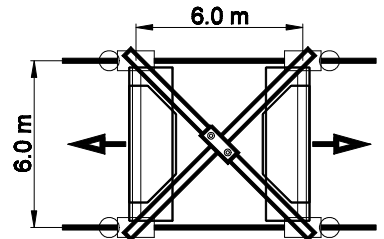
FK 619



FKF 514 / 519



FKF 619



Bodenauflagen

Ground support
Support sol

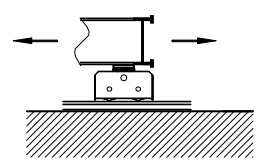
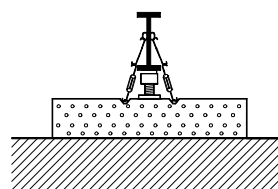
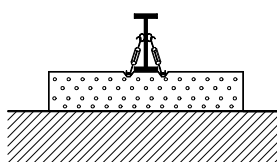
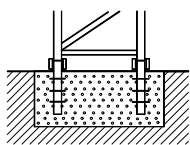
Version:

A

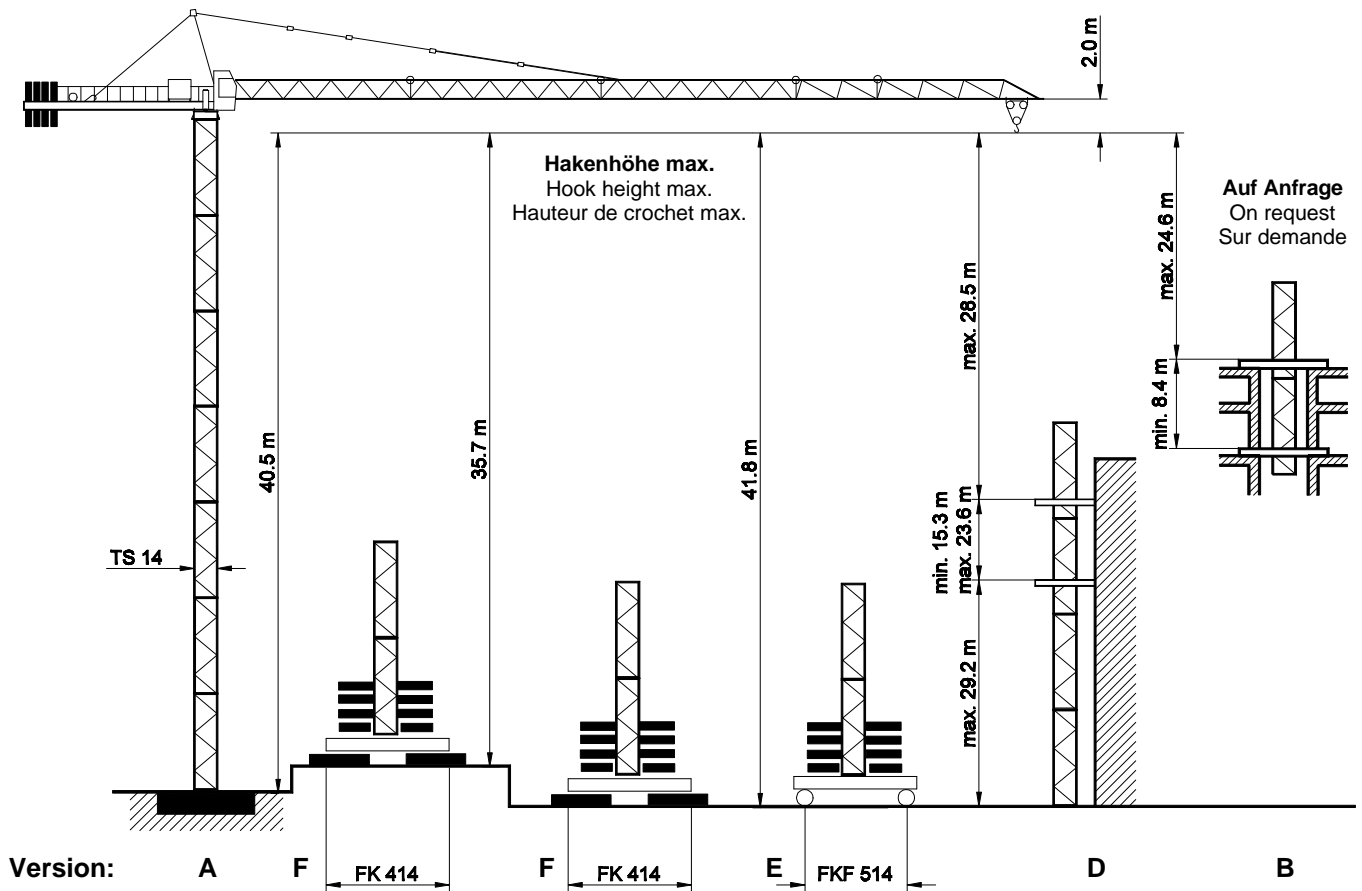
F

F / SP

E



SK 96/1 Turm / Tower / Tour TS 14

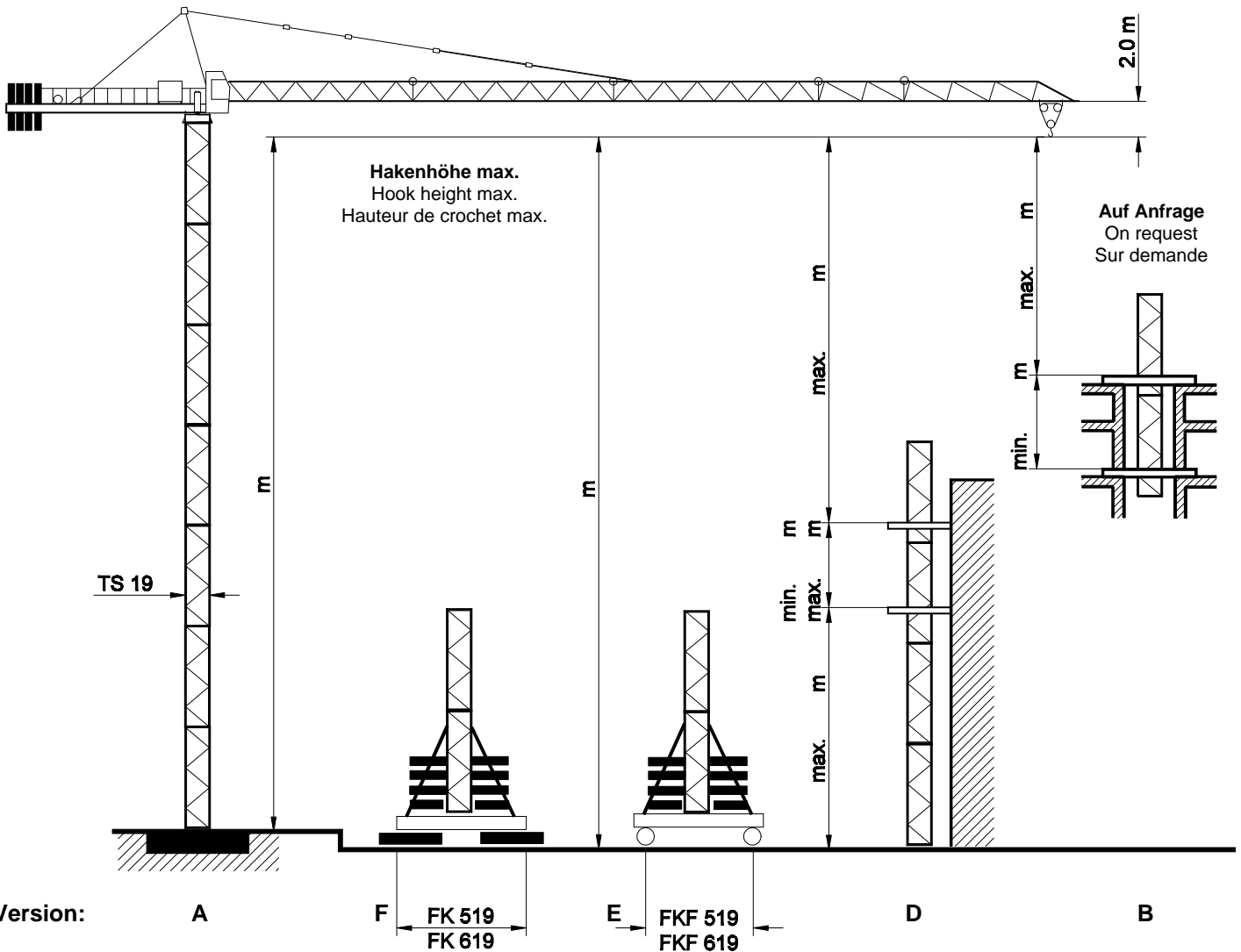


TS 14		Version A		Version F						Version E						
Turm / Tower / Tour TS 14.3 TS 14.4		HK	HK	BZ + BF	y		HK	BZ + BF	y		Turm / Tower / Tour TS 14.3 TS 14.4		BZ	y		
5.9 m 11.8 m		m	m	t	i.B. kN	a.B. kN	m	t	i.B. kN	a.B. kN	5.9 m	11.8 m	t	kN	kN	
1 x TSV 14.3 6 x TS 14.3		40.5					41.8	53.0	418	529	2 x TSV 14.3 5 x TS 14.3		52.2	457	529	
6 x TS 14.3 3 x TS 14.4		34.6	35.7	70.8	471	501	35.9	43.0	371	402	6 x TS 14.3 3 x TS 14.4		42.2	403	408	
5 x TS 14.3		27.7	29.8	50.8	398	374	30.0	33.0	327	312	5 x TS 14.3		32.2	351	319	
4 x TS 14.3 2 x TS 14.4		22.8	23.9	40.8	352	292	24.1	23.0	284	230	4 x TS 14.3 2 x TS 14.4		22.2	300	236	
3 x TS 14.3		16.9	18.0	30.8	308	263	18.2	23.0	267	226	3 x TS 14.3		22.2	281	232	
2 x TS 14.3 1 x TS 14.4		11.0	12.1	30.8	290	259	12.3	23.0	252	222	2 x TS 14.3 1 x TS 14.4		22.2	264	228	
1 x TS 14.3		5.1	6.2	30.8	275	255	6.4	23.0	238	218	1 x TS 14.3		22.2	249	225	
Fundament Foundation Fondaton 5.6 x 5.6 x 1.2 m			Fundamentkreuz Cruciform base Croix de fondation						Fundamentkreuz, fahrbar Cruciform base, railgoing Croix de fondation, mobile							
			FK 414			FK 514			FKF 514							
Fundamentfüße Fixing angles Ancres de fondation 4 x FF 10/14			BF 4 x 2.7 t		BZ Block 5.0 t		BF 4 x 2.7 t		BZ Block 5.0 t 6.1 t			Fahrschemel / bogie gerade / straight / droite F 320				

TS 14.3 = 5.9 m

TS 14.4 = 11.8 m

TSV 14.3 = 5.9 m



TS 19	Version A	Version F						Version E							
Turm / Tower / Tour TS 19.1 5.9 m	HK	HK	BZ + BF	i.B.	y	a.B.	BZ + BF	i.B.	y	a.B.	BZ	i.B.	y	a.B.	
	m	m	t	kN	kN	kN	t	kN	kN	t	kN	kN	t	kN	
7 x TS 19.1															
6 x TS 19.1															
5 x TS 19.1															
4 x TS 19.1															
3 x TS 19.1															
2 x TS 19.1															
1 x TS 19.1															
Fundament Foundation Fondaton 7.4 x 7.4 x 1.2 m		Fundamentkreuz Cruciform base Croix de fondation						Fundamentkreuz, fahrbar Cruciform base, railgoing Croix de fondation, mobile							
Fundamentfüße Fixing angles Ancres de fondation 4 x FF 19		FK 519		FK 619		FKF 519		FKF 619		Fahrschemel / bogie gerade / straight / droite			Fahrschemel / bogie Kurve / curve / courbe		
		BF 4 x 4.0 t	BZ Block 5.0 t 6.1 t	BF 4 x 4.0 t	BZ Block 5.0 t 6.1 t					F 500			F 500		

TS 19.1 = 5.9 m

TSV 19.1 = 7.9 m

SK 96/1

Ausladung und Tragfähigkeit / Radius and capacity / Portée et charge

Ausleger Jib Flèche	Max. Tragfähigkeit max. capacity charge max.	Ausladung (m) und Tragfähigkeit (t) Radius (m) and capacity (t) Portée (m) et charge (t)															
		17	19	21	23	25	27	29	31	33	35	37	40	42	45	47	50
m	6.0 t																
L4 50.0	2.4 - 15.3 m	5.32	4.69	4.19	3.78	3.44	3.15	2.90	2.68	2.49	2.32	2.25	1.98	1.86	1.71	1.62	1.50
L3 45.0	2.4 - 16.6 m	5.84	5.15	4.60	4.16	3.78	3.46	3.19	2.95	2.75	2.57	2.40	2.19	2.07	1.90		
L2 40.0	2.4 - 17.9 m		5.61	5.01	4.53	4.12	3.78	3.48	3.23	3.03	2.81	2.63	2.40				
L1 35.0	2.4 - 18.4 m		5.78	5.17	4.67	4.25	3.90	3.60	3.33	3.10	2.90						

Geschwindigkeiten / Speeds / Vitesses

FU 4-60/4		v = 80 m / min.	4.0 kW	400 V	
SR 5-90/3		v = 0 → 25 m / min.	2 x 5.0 kW		50 Hz
K SRA 55/3		v = 0 → 0.75 min ⁻¹	2 x 4.4 kW		3 Ph

HK max. = 90 m **2 - Lagen / 2 - layers / 2 - couches**

Type PU 24-30/3 24.0 kW				→ 65 m / min	1 500 kg		→ 32 m / min	3 000 kg	Motorenleistung ges. Total motor output Puissance moteur (ohne/without/sans SR 5-90/3) ~ 35 kW
				→ 31 m / min	3 000 kg		→ 16 m / min	6 000 kg	

HK max. = 85 m **2 - Lagen / 2 - layers / 2 - couches**

Type FU 34-30/5 34.0 kW		Traglast [t] 	Traglast [t] 		Motorenleistung ges. Total motor output Puissance moteur (ohne/without/sans SR 5-90/3) ~ 45 kW
					Anschlußleistung Connected power Puissance installée 50 kVA

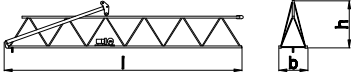
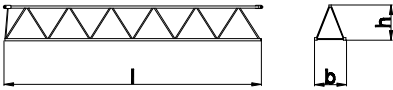
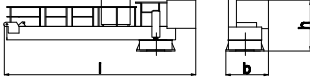
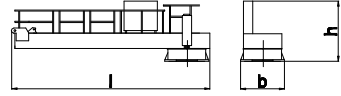
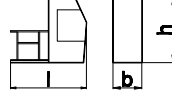
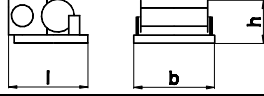
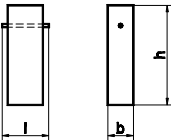
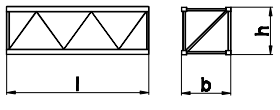
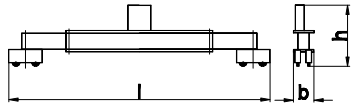
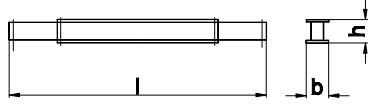
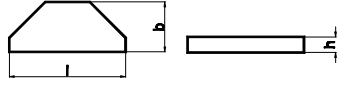

Gegengewichtsballast / Counterweight / Contrepoids

Ausleger / Jib / Flèche		L 1	L 2	L 3	L 4
Gegengewicht Counterweight Contrepoids	BG	10 650 kg	11 300 kg	11 300 kg	12 600 kg
	[t]	3 x 2.50 1 x 3.15	2 x 2.50 2 x 3.15	2 x 2.50 2 x 3.15	4 x 3.15

SK 96/1; 106/1 Transportmaße und Transportgewichte

Dimensions and weights of transport
Dimensions et poids pour transport

Montagegewichte siehe Betriebsanleitung!
Mounting weights see operating manual!
Poids de montage voir instruction de service!

	Benennung Designation Désignation		Abmessungen (m / ft) Dimensions (m / ft)			Gewicht Weight Poids t / kips	Volumen Volume m³ / ft³	
			l	b	h			
1	Ausleger / Jib / Flèche Schuss / Section / Élément I			12.05 39.53	1.32 4.33	2.10 6.89	2.40 4.2	33.4 1179
2	Ausleger / Jib / Flèche Schuss / Section / Élément II			11.96 39.23	1.20 3.94	1.27 4.16	1.15 2.5	18.2 643
	Schuss / Section / Élément III	12.17 39.93		1.22 4.00	1.45 4.76	1.05 2.3	21.5 760	
	Schuss / Section / Élément IV	5.20 17.06		1.22 4.00	1.28 4.20	0.27 0.6	4.5 286	
	Schuss / Section / Élément V	10.20 33.46		1.22 4.00	1.28 4.20	0.39 0.9	15.9 562	
	Seilstation / Jib tip / Bout de flèche X	1.25 4.10		0.56 1.84	1.08 3.54	0.07 0.2	0.8 26.7	
3	Drehbühne mit Drehkranzauflage u. Kabine Turntable with slewing ring support and cabin Plateforme tournante avec support de couronne d'orientation et cabine			13.20 43.30	2.27 7.45	2.35 7.71	7.33 16.2	70.0 2487
4	Drehbühne mit Drehkranzauflage Turntable with slewing ring support Plateforme tournante avec support couronne d'orientation			11.87 38.84	1.74 1.74	2.25 7.38	5.80 12.8	46.4 498
5	Kabine mit Podest und Geländer Cabin with support and railing Cabine avec appui et garde corps			2.95 9.68	1.23 3.91	2.10 6.67	0.60 1.3	7.6 252
6	Hubwinde Hoist winch Mécanisme de levage	PU 24		1.35 4.43	1.82 5.97	0.70 2.29	0.85 1.9	1.7 61
		FU 34						
7	Gegengewichtsballast Counter jib ballast Contrepoids	BG		1.20 3.94	0.50 1.64	3.69 12.11	4.15 9.1	2.2 78
		4.15 t		1.20 3.94	0.50 1.64	2.84 9.32	3.15 6.9	1.7 60
		3.15 t		1.20 3.94	0.50 1.64	2.29 7.5	2.50 5.5	1.4 51
		2.50 t		1.20 3.94	0.50 1.64	2.29 7.5	2.50 5.5	1.4 51
				1.20 3.94	0.50 1.64	2.29 7.5	2.50 5.5	1.4 51
8	mit Streben, with struts, avec étançons Turmschuss Tower section Élément de tour mit Streben, with struts, avec étançons	TS 14.3		5.91 19.39	1.60 5.25	1.61 5.28	1.45 3.2	15.22 538
		TSV 14.3		5.91 19.39	1.60 5.25	1.61 5.28	1.64 5.4	15.22 538
		TS 19.1		5.93 19.46	2.10 6.89	2.06 6.76	2.62 5.8	25.66 906
		TSV 19.1						
		TS 14.4		11.80 38.71	1.60 5.25	1.61 5.28	2.70 5.9	30.40 1073
9	Fundamentkreuz, fahrbar, geklappt Movable undercarriage, folded Châssis roulant, replié	FKF		8.25 27.07	2.40 7.87	1.67 5.48	7.40 24.3	33.07 1167
		514		8.25 27.07	1.50 4.92	1.56 5.12	8.80 28.9	19.31 681
10	Fundamentkreuz, stationär, geklappt Stationary undercarriage, folded Châssis fixe, replié	FK		6.04 19.82	1.68 5.51	0.81 2.66	3.40 7.5	8.22 290
		414		7.55 24.77	1.50 4.92	1.01 3.31	4.90 16.1	11.44 403
		514		7.58 24.87	1.36 4.46	0.95 3.11	5.40 11.9	9.80 345
		519						
11	Zentralballaststein Central ballast block Bloc de fondation	BZ		4.00 13.12	1.35 4.43	0.65 2.13	6.10 13.4	3.5 124
		6.1 t		3.50 11.48	1.50 4.92	0.67 2.20	5.00 11.2	3.5 124
		5.0 t						
12	Fundamentblock Foundation pad Bloc de fondation	BF		2.80 9.19	0.70 2.30	0.55 1.80	2.70 5.9	1.08 38
				2.80 9.19	1.00 3.28	0.57 1.87	4.00 8.82	1.60 57
13	Diverse Montageteile Accessories Accessoires		